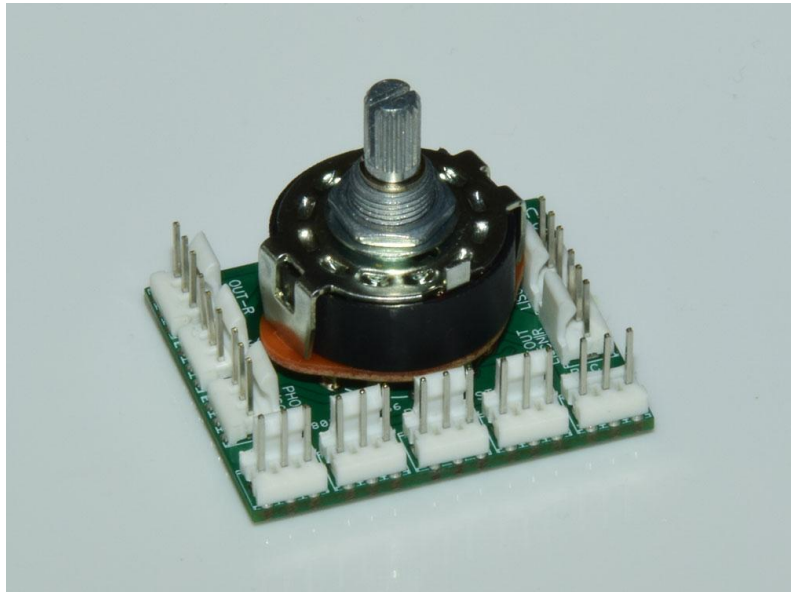


Application & Purpose:

PCB for mounting rotary selector switch and connecting record-monitor switch

Picture shows metal Alpha selector switch. PCB to fit an Alps selector switch is also available.

Both PCBs are shipped together in ZinAmp kits to make sourcing the correct switch easier.



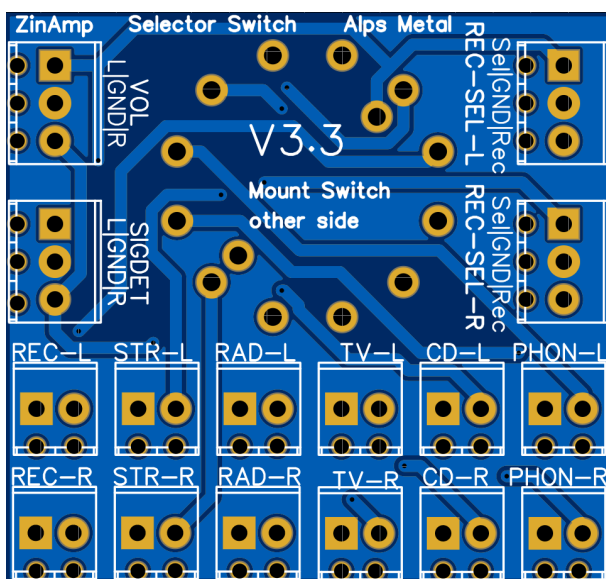
Specification:

Purpose	- Six position selector switch for amplifier inputs - Hub for record-monitor switch
Features	- Six inputs - Record monitor switch bridge

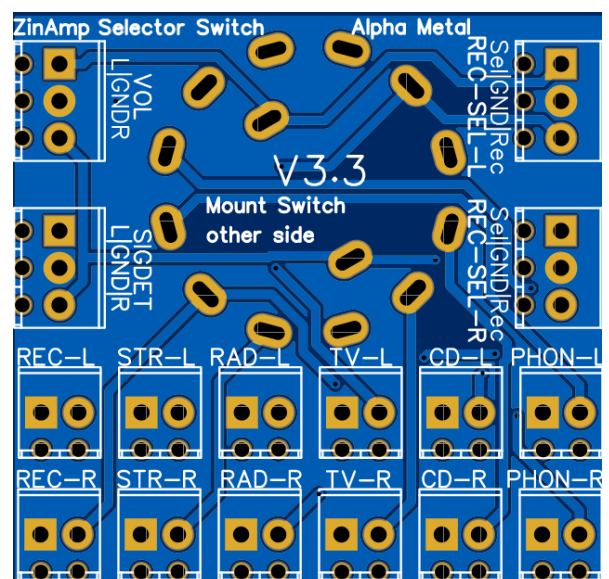
Details:

Mounted in the front-panel of ZinAmp integrated and pre amplifiers.

Bare PCBs - switch mounted on reverse side:



Alps Switch



Alpha Switch

General Layout and use:

Left and Right channel input connections are at the bottom of the PCB. Phono, CD, TV, Radio, Streaming and Record. These are typically connected to RCA inputs.

The VOL terminals connect to a volume control or downstream stage. L|GND|R. GND is audio ground

SIGDET is used in a ZinAmp valve amplifier where auto-power off is in use.

REC-SEL-L and REC-SEL-R connect to a Record Monitor switch. This provides a toggleable selection between the currently selected input and the record input. This forms a record monitor loop.

Parts List:

CONNECTORS: Connectors are not included and can be purchased and soldered on by the constructor. This is to give the constructor a choice of how they wire their own particular installation. Terminal block connectors are indicated in the list below in [blue](#) and can be swapped for equivalent 2.54mm pitch connectors e.g. Molex KK254 headers, which are provided to the constructor in self-wire kits.

Designator	Value/Spec	Quantity	Supplier	Manufacturer	Manufacturer Part	Supplier Part
2P6T Rotary Switch	U1	1	See Kit List	Alpha	See Kit List	See Kit List
STR-R,REC-R, RAD-R,TV-R,P HON-R,CD-R, CD-L,REC-L,STR-L,RAD-L,TV-L,PHON-L	2 Pole Terminal (self-wire only)	12	RS	RS-PRO	790-1098	790-1098
VOL,SIGDET,OUT-R,OUT-L	3 Pole Terminal (self-wire only)	4	RS	RS-PRO	790-1092	790-1092

Parts available from [RS Online](#). Also try [Farnell](#), [Mouser](#) and other online suppliers.

Parts from different manufacturers can be substituted where spec is sufficient

Supplier trading names may differ by country.